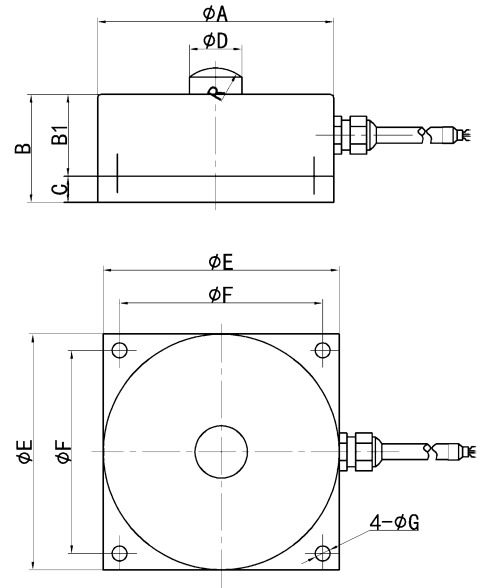
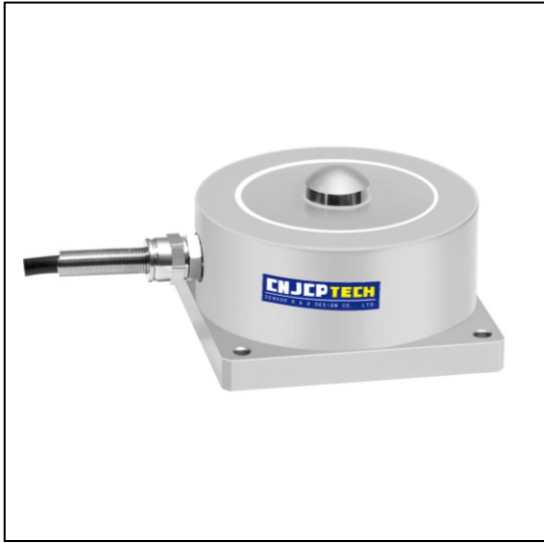


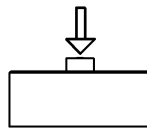
压向力传感器/Force sensor

型号: F22Y

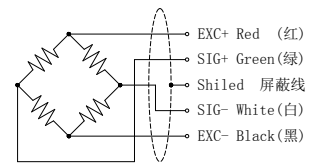


量程 CAP	A	B	B1	C	D	E	F	R	G
200kg~700kg	72	41	25	8	16	72	62	13	4.6
1~8t	88	53	34	10	20	88	75	18	5.6
10~15t	114	70	46	13	25	114	95	25	6.5
20~30t	145	93	60	16	32	145	120	30	11

●受力方式 / Load Direction



●接线图/ Schematic Wiring Diagram



●参数/Specifications:

输出灵敏度 Rated output	2.0±10% mV / V	输出电阻 Output impedance	350~3Ω
零点输出 Zero balance	± 1 % F.S.	绝缘电阻 Insulation	≥5000MΩ/100VDC
非线性 Non-linearity	0.05%~0.1% F.S.	激励电压 Recommended excitation	5~10V
滞后 Hysteresis	0.05% F.S.	最大激励电压 Maximum excitation 15 V	15V
重复性 Repeatability	0.05 % F.S.	温度补偿范围 Compensated temp range	- 10 ~ 60 °C
蠕变 (30 分钟) Creep (30min)	0.50 % F.S.	工作温度范围 Operation temp range	- 20 ~ 80°C
温度灵敏度漂移 Temp.effect on output	0.05 % F.S. / 10°C	安全超载 Safe overload	120% F.S.
零点温度漂移 Temp.effect on zero	0.05 % F.S. / 10°C	极限超载 Ultimate overload	150 % F.S.
输入电阻 Input impedance	380~10Ω	防护等级 Protection class	IP66

●材料: 合金钢 Material: alloy steel

●特点: 受力方式为压向.

●用途: 一般用于工业领域的测试、测量及控制系统等。如: 3C 产品测试、自动化组装、冷热压机压力检测、新能源产品组装、轴压装、医疗检测、机器人领域等.

●The way of stress is pressure.

●It is generally used in industrial testing, measurement and control systems. Such as: 3C product testing, automated assembly, hot and cold press pressure testing, new energy product assembly, shaft press, medical testing, robotics, etc.